

# THE JOY OF INCLUSIVE LIVING



MY HOME  
**AVATAR**  
THE JOY OF INCLUSIVE LIVING



LEGEND

- 1 Main Entrance & Exit Gate
- 2 V.D.F Flooring
- 3 Cycling / Skating Track
- 4 Jogging Track / Pathway
- 5 Lawn
- 6 Deck Under Pergola with Seating
- 7 Children's Play Area
- 8 Badminton Court
- 9 Tennis Court
- 10 Basketball Court
- 11 Cricket Practice Nets
- 12 Fitness Station
- 13 Amphitheater
- 14 Gents & Boys Pool
- 15 Ladies & Girls Pool
- 16 Open Showers
- 17 Viewing Gallery
- 18 Mound with Specimen Trees
- 19 Seating with Grid Planting
- 20 Pylon
- 21 Gas Bank
- 22 Entry to Basement



# TYPICAL FLOOR PLAN

BLOCK - 1 TO 10



**3BHK-E.F**  
1834 SFT



**3BHK-W.F**  
1834 SFT



**2BHK-E.F**  
1314 SFT



**2BHK-W.F**  
1314 SFT



**2BHK-E.F**  
1314 SFT



**2BHK-W.F**  
1314 SFT



**2BHK-E.F**  
1314 SFT



**2BHK-W.F**  
1314 SFT



**3BHK-E.F**  
1834 SFT

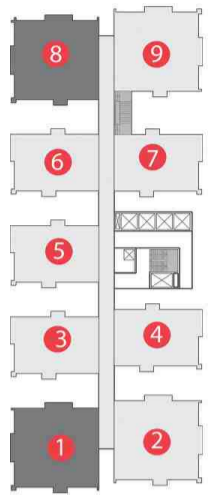


**3BHK-W.F**  
1834 SFT



7'-3" WIDE PASSAGE

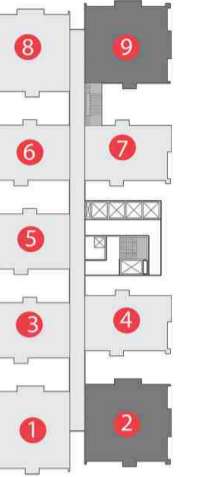
**UNIT TYPE 1** 1834 SFT | EAST FACING | 3BHK



**KEY PLAN**  
BLOCK - 1 TO 10



**UNIT TYPE 2** 1834 SFT | WEST FACING | 3BHK

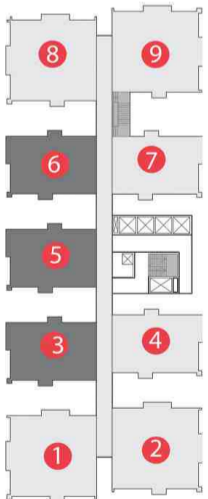


**KEY PLAN**  
BLOCK - 1 TO 10

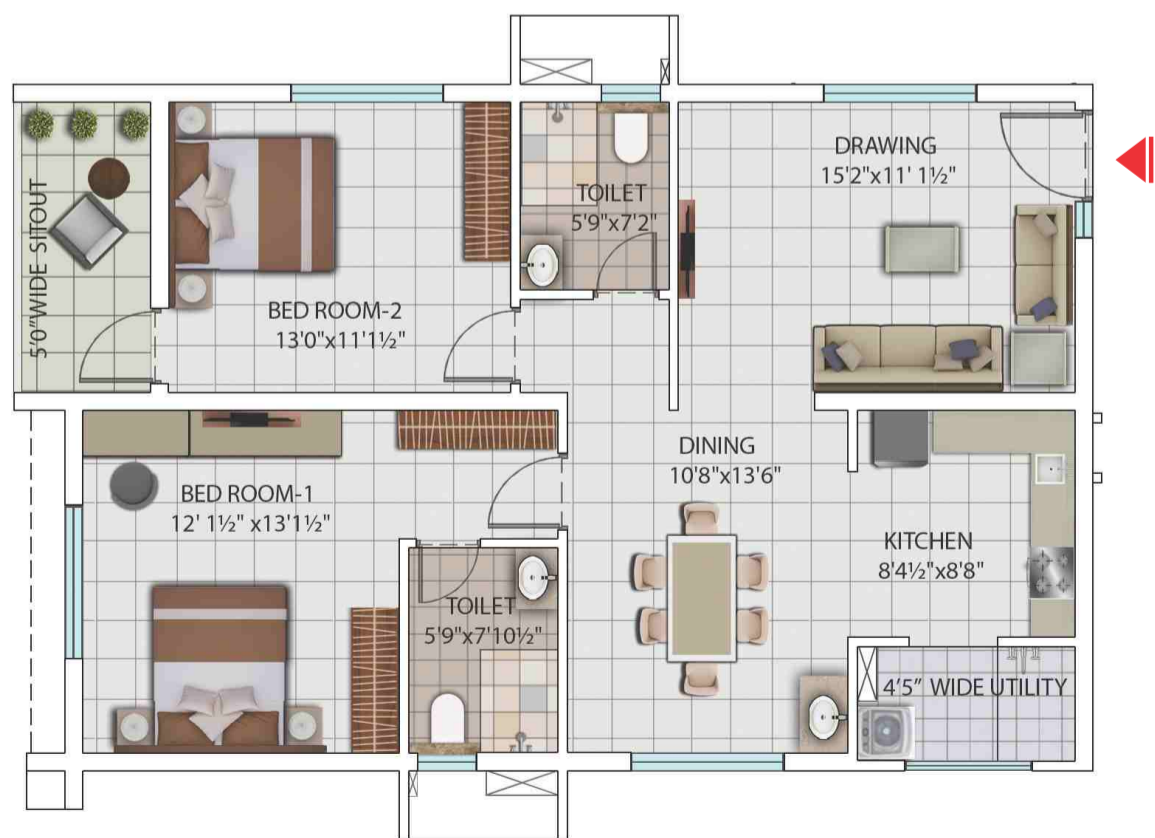


\*Note: Window location for Flat No. 2

**UNIT TYPE 3** 1314 SFT | EAST FACING | 2BHK



**KEY PLAN**  
BLOCK - 1 TO 10



**UNIT TYPE 4** 1314 SFT | WEST FACING | 2BHK



**KEY PLAN**  
BLOCK - 1 TO 10



“What's the final & most important point? Location, location, location!”



If Gachibowli is on your radar, Puppalaguda is just the place to be. Gachibowli is indisputably, the most happening and sophisticated neighborhood in Hyderabad. Premium schools, shopping malls, hospitals, banks, corporate addresses are all here. Connectivity to all major hubs of the city is fantastic. And with the International Airport within easy access, the world is at your feet!



LOCATION ADVANTAGES

- Close to Financial District of Hyderabad
- Close to Major educational institutions
- Close to corporate hospitals
- Well connected to major destinations of the city





# SPECIFICATIONS

FOR ALL BLOCKS

## **SUPER STRUCTURE**

RCC shear wall-framed structure, resistant to wind and earthquake (Zone -2).

## **WALLS**

**External Wall:** Reinforced shear wall and/or solid cement concrete blocks.

**Internal Wall:** Reinforced shear wall and/or solid cement concrete blocks/pre-cast concrete members.

## **CEILING FINISHES**

**Drawing, dining, living, bedrooms, kitchen and balcony:** Smoothly finished with putty and Acrylic emulsion paint.

**Bathrooms:** Grid ceiling to cover all service lines.

## **WALL FINISHING**

**Drawing, dining, living, bedrooms, kitchen and balcony:** Smoothly finished with putty and Acrylic emulsion paint.

**Bathrooms:** Ceramic tiles cladding up to lintel height.

## **FLOORING**

**Drawing, dining, living, bedrooms, kitchen:** 600 x 600 mm size double charged vitrified tiles of best brands with spacer joint.

**Balcony/Bathrooms/Utility:** Anti-skid vitrified/ceramic tiles.

**Corridors:** Vitrified tiles of reputed make.

**Staircase:** Natural stone.

## **WINDOWS / GRILLS**

All windows are of aluminum alloy / UPVC glazed sliding / open-able shutters with EPDM gaskets, necessary hardware with M.S. grill and provision for mosquito shutter.

## **DOORS**

**Main Door:** Hard wood frame, finished with melamine spray polish, Teak finished flush shutters with reputed hardware.

**Internal Door:** Hard wood frame or factory made wooden frames with both sides laminated flush shutter with reputed hardware.

**Bathrooms/Utility door:** Granite frame with both sides laminated flush shutter with reputed hardware.

**Balconies:** Aluminium/UPVC glazed French sliding doors with mosquito mesh provision.

## **ALL BATHROOMS**

Vanity type wash basin with single lever basin mixer.

EWC with flush valve of the best brand.

Single lever bath and shower mixer.

Provisions for geysers in all bathrooms.

All faucets are chrome plated of best brands.

## **KITCHEN**

Granite platform with stainless steel sink.

Piped LPG gas connection with gas meter.

Provision for water purifier.

## **ELECTRICAL**

Concealed copper wiring of reputed make.

Power outlet for air-conditioner in all bedrooms and living.

Power outlets for geysers in all bathrooms.

Power outlets for chimney, Hob/hot plate, refrigerator, microwave oven, mixer/grinder in kitchen.

Washing machine point in Utility area.

03 phase supply for each unit and individual meter boards.

Miniature Circuit Breakers (MCB) for each distribution board of reputed make.

Modular switches of reputed make.

## **LIFTS**

V3F drive high speed lifts of OTIS or equivalent make.

Lift lobby cladding with vitrified tiles /granite.

## **TV / TELEPHONE**

Fibre to the Home with Wi-Fi, internet, DTH, telephone and Intercom.

Telephone, Television points in drawing, living & all bedrooms.

## **WATER PROOFING**

Waterproofing shall be provided for bathrooms, roof terrace, utility area and balcony.

## **SECURITY**

Comprehensive security system with cameras in appropriate locations.

Intercom facility to all units connecting Security.

## **FIRE SAFETY**

Fire alarm, automatic sprinklers and wet risers as per Fire Authority regulations.

## **POWER BACK UP**

Metered DG backup up to 2 KV per unit except for A.C's & geysers.

## **WTP & STP**

Water treatment plant for bore-well water and water meter for each Unit.

A Sewage Treatment Plant of adequate capacity, as per norms will be provided inside the project. Treated sewage water will be used for the landscaping and flushing purpose.

## **LPG**

Supply of gas from centralized Gas bank to all individual flats with gas meters.

PROMOTERS



**My Home Constructions Pvt. Ltd.**  
8th Floor, Block - 3, My Home Hub, Madhapur  
Hyderabad - 500 081, Telangana  
Ph: +91 40 - 6688 8888, 91000 88 888

---

✉ [mktg@myhomeconstructions.com](mailto:mktg@myhomeconstructions.com)

🌐 [www.myhomeconstructions.com](http://www.myhomeconstructions.com)

---